

Gas Bratt Pans

80 L. Gas bratt pan - automatic tilting

NESG94FRA

900 line

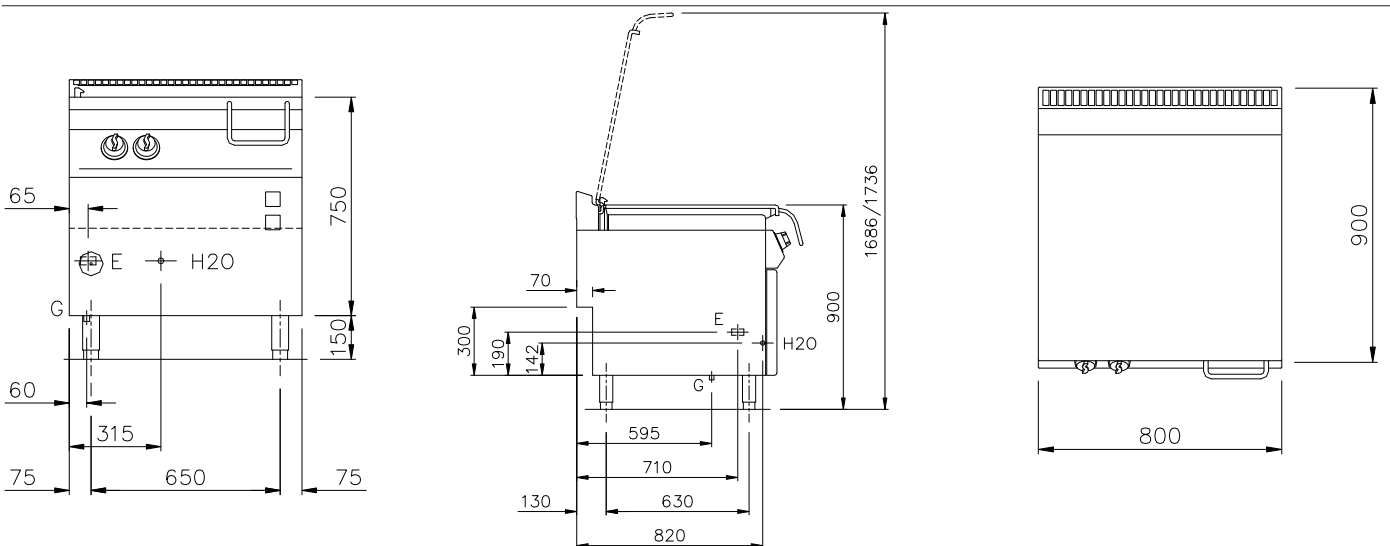
SILKO
IDEAS. WELL DONE

Gas tilting bratt pan constructed in Aisi 304 stainless steel. Cooking tank with motorized tilt mechanism, constructed in stainless steel, 80-litre capacity, rectangular in shape with radiused corners for ease of cleaning, available with compound bottom (FE430 e Aisi 316) 12mm thickness, or with FE360 mild steel bottom 12mm thickness. Double skinned lid with drip zone at rear for conveying condensate liquid into the pan, fitted with sturdy Aisi 304 stainless steel hinges with spring balancing. Automatic water loading operated by pushbutton.

Fixed water tap located on top. Satin-finish AISI 304 tubular steel handle with front grip, joined to lid. Heating by means of steel burner with stabilized flame underneath the tank, gas safety valve with thermocouple. Electric pilot burner ignition operated by gas valve pushbutton. Thermostatic temperature control from 100° to 280 °C. Safety thermostat. Orange indicator light on control panel indicates appliance operation. Heating automatically turned off when pan is tilted. Height adjustable feet in stainless steel.



Width mm.:	800
Depth mm.:	900
Height mm.:	900
Weight kg.:	-
Volume m³:	1
Voltage: El.	VAC230-1 50/60 Hz
PowerkW.:	0,3
Gas Power (kw):	20



NOTE

- All dimensions reported on the drawing are meant with finished tiled-floor and side walls
- Main gas connections must be provided of closing gate device
- Mass connections must not use welded tubes
- Gas connections must be settled according to current rules in the country
- Electric connections must be provided of safety switch and a minimum exit wire of 1,5 meter length (except where otherwise required in the drawing) - All sockets must be built according to safety-rules in force. Suited for humid room and settled with necessary plug
- All electric connections must be provided of main switch

G = Gas Ø 1/2"
E = Electric
H2O = Cold water Ø 3/4"

Silko - Ali S.p.A.
Via Cal Larga, 8
Z.I San Giacomo di Veglia
31029 Vittorio Veneto
(TV) ITALY
T (+39) 0438 911930
F (+39) 0438 506291
info@silko.it

www.silko.it