

Gas Ranges

6 Burners gas range

NECG76G

700 line

SILKO
IDEAS. WELL DONE

Gas hob constructed from Aisi 304 stainless steel. 15/10 pressed top without flue apertures, designed for flush alignment. Appliance standard comprises 6 sealed burners, with maximum output of 6 kW. Safety tap with thermocouple for continuous output control from 1,6 to 6 kW. Main burner ignition by means of permanent, low-energy pilot burner (170 W).

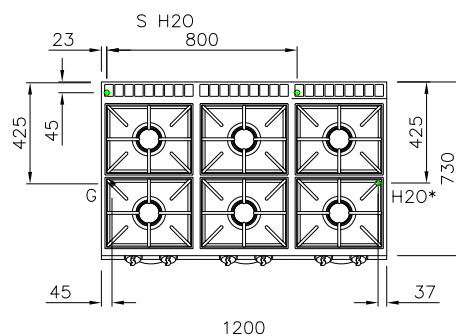
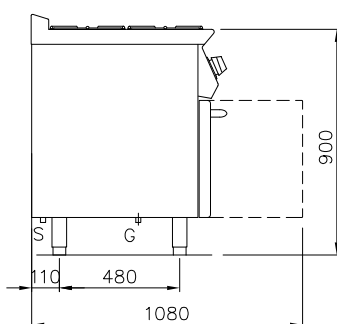
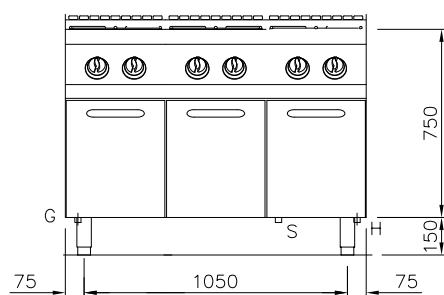
Pilot burner and thermocouple are located underneath the main burner body, protected from accidental impact and any spills. Hob features radiused corners for ease of cleaning and pan supports in RAAF enamelled cast-iron (acid, alkali and flame resistant). 1200 mm open base. Appliance equipped with height adjustable feet in stainless steel.



Width mm.:	1200
Depth mm.:	730
Height mm.:	900
Weight kg.:	-
Volume m ³ :	1,2

Voltage: El.	-
Power kW.:	-

Gas Power (kw):	36
-----------------	----



NOTE

- All dimensions reported on the drawing are meant with finished tiled-floor and side walls
- Main gas connections must be provided of closing gate device
- Mass connections must not use welded tubes
- Gas connections must be settled according to current rules in the country
- Electric connections must be provided of safety switch and a minimum exit wire of 1,5 meter length (except where otherwise required in the drawing) - All sockets must be built according to safety-rules in force. Suited for humid room and settled with necessary plug
- All electric connections must be provided of main switch

G = Gas Ø 1/2"
H / H20* = Cold water Ø 1/2"
S / S H20* = Drain Ø 1/2"

* = optional

Silko - Ali S.p.A.
Via Cal Larga, 8
Z.I San Giacomo di Veglia
31029 Vittorio Veneto
(TV) ITALY
T (+39) 0438 911930
F (+39) 0438 506291
info@silko.it

www.silko.it