

Gas Ranges

4 Burners gas range with gas oven

NECG74F
700 line

SILKO
IDEAS. WELL DONE

Range cooker with gas hob constructed from Aisi 304 stainless steel. 15/10 pressed top, designed for flush alignment. Appliance standard comprises 4 sealed burners with maximum output of 6 kW. Safety tap with thermocouple for continuous output control from 1,6 to 6 kW. Main burner ignition by means of permanent, low-energy pilot burner (170 W). Pilot burner and thermocouple are located underneath the main burner body, protected from accidental impact and any spills.

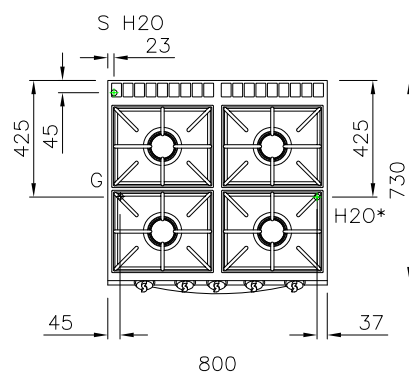
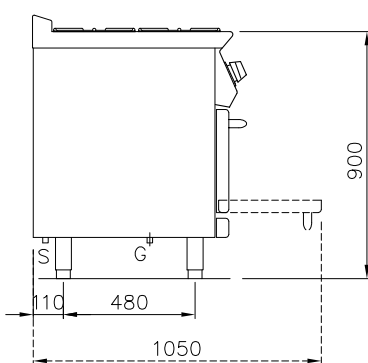
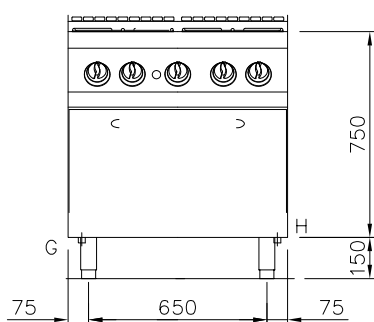
Hob features radiused corners for ease of cleaning and pan supports in RAAF enamelled cast-iron (acid, alkali and flame resistant). GN 2/1 gas oven with thermostatic control valve providing temperature adjustment from 50°C to 300°C. Burner with stabilized flame complete with pilot flame, safety thermocouple and piezoelectric ignition. Cooking chamber in stainless steel, dimensions 575x650x300h mm. Oven power 8 kW. Oven bottom plate in black enamelled iron. Oven inner door in stainless steel with labyrinth seal. Appliance equipped with height adjustable feet in stainless steel.



Width mm.:	800
Depth mm.:	730
Height mm.:	900
Weight kg.:	-
Volume m³:	0,8

Voltage: El.	-
Power kW.:	-

Gas Power (kw):	32
-----------------	----



G = Gas Ø 1/2"
H = cold water Ø 1/2" S /
S H2O* = Scarico Ø 1/2"

* = optional

NOTE

- All dimensions reported on the drawing are meant with finished tiled-floor and side walls
- Main gas connections must be provided of closing gate device
- Mass connections must not use welded tubes
- Gas connections must be settled according to current rules in the country
- Electric connections must be provided of safety switch and a minimum exit wire of 1,5 meter lenght (except where otherwise required in the drawing) - All sockets must be built according to safety-rules in force. Suited for humid room and settled with necessary plug
- All electric connections must be provided of main switch

Silko - Ali S.p.A.
Via Cal Larga, 8
Z.I San Giacomo di Veglia
31029 Vittorio Veneto
(TV) ITALY
T (+39) 0438 911930
F (+39) 0438 506291
info@silko.it

www.silko.it