

SERIES	PRODUCT FAMILY	VERSION	MODEL
900	FRYER	ELECTRIC	NEFE94222

DESCRIPTION

ELECTRIC FRYER 2 WELLS 22+22 LT.



TECHNICAL DATA:

STRUCTURE	FLOOR	WELL CAPACITY	22 LT.
WIDTH	800 mm	WELL DIMENSIONS	340x420x180 mm
DEPHT	900 mm		
HEIGHT	900 mm		
NET WEIGHT	103 kg		
VOLUME	0.9 m3		
ELECTRIC POWER	36 kW		
PHASE	3N		
FREQUENCY	50/60 Hz		
VOLTAGE	400 V		

SERIES	PRODUCT FAMILY	VERSION	MODEL
900	FRYER	ELECTRIC	NEFE94222

FEATURES:

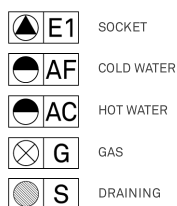
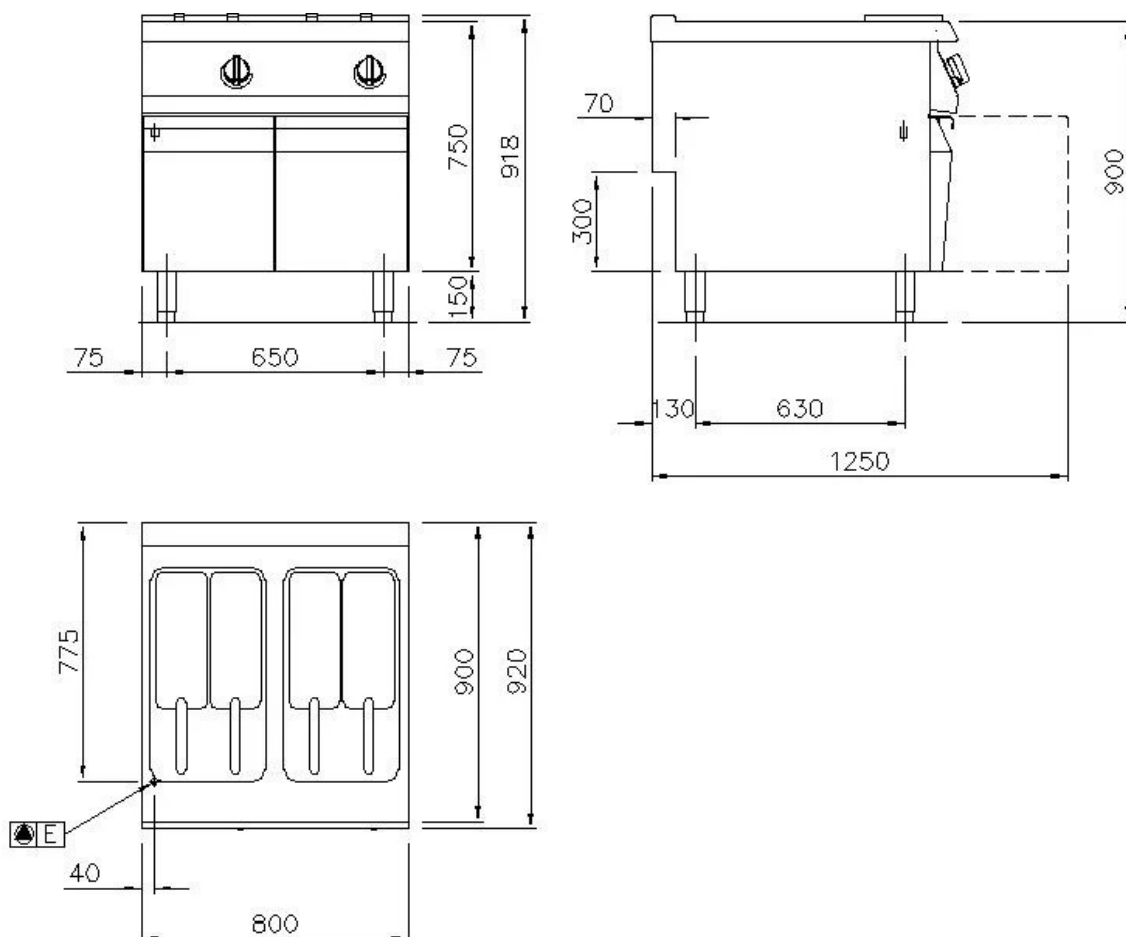
Electric Fryer, double well, Monoblock unit on cupboard with hinged door. Cook top made of stainless steel AISI 304, thickness 20/10, pre-fitted for head-to head connection. Pressed wells made of stainless steel AISI 304, with radiused inner profile. Well capacity in litres 22+22. Well with wide expansion area in the front part for oil and foam and extended cooling area in the front part for collection of food particles. Heating by means of shielded electrical resistance in stainless steel AISI 304 positioned inside the well. The resistances rotates over 90° to make cleaning procedures easier. An orange signal light on the control panel signals that heating has been activated. Oil temperature inside the well controlled via mechanical thermostat, with a setting range between 100 and 185 °C. Manually resettable safety thermostat. Extractable filter, basket and lid and collector for drain cock included. Height-adjustable feet in stainless steel.

OPTIONAL ACCESSORIES:

• OIL DRIP TRAY	EBAC9
• Basket 1/1 for 22 and 23 lt. well.	ECF22

SERIES	PRODUCT FAMILY	VERSION	MODEL
900	FRYER	ELECTRIC	NEFE94222

INSTALLATION SCHEME



400 V

3N

NOTES FOR THE INSTALLER:

All water and gas connections must be fitted with a shut-off valve or ball valve.
Main gas connections must be provided of closing gate device.

Gas connections must not use welded tubes.

Gas connections must be jacketed according to current rules in the country.

Electric connections must be provided of safety switch and a minimum exit wire of 1,5 meter lenght (except where otherwise required in the drawing).

All sockets must be built according to safety-rules in force. Suited for humid room and settled with necessary plug.
All electric connections must be provided of main switch.

The specification shown in this document are to be considered not bounding.

The company reserves the right to make technical changes at any moment.