

Gas Ranges

4 Burners gas range with gas oven

NECG94F
900 line

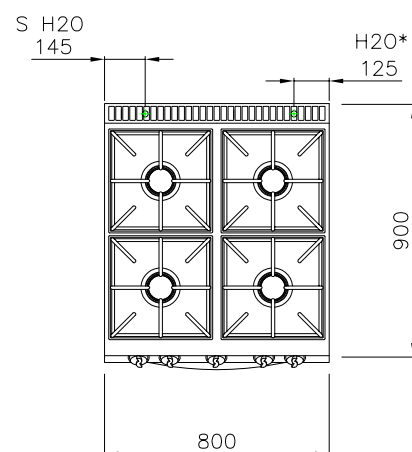
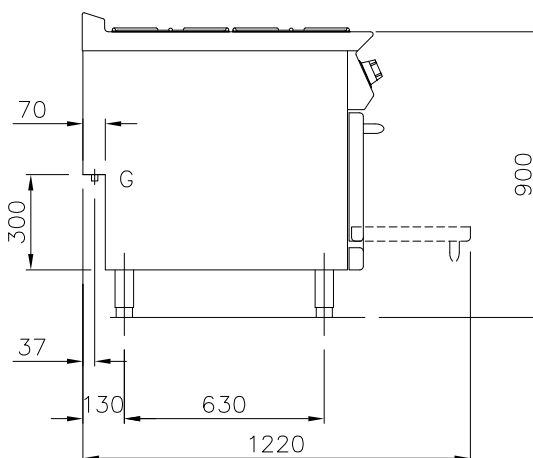
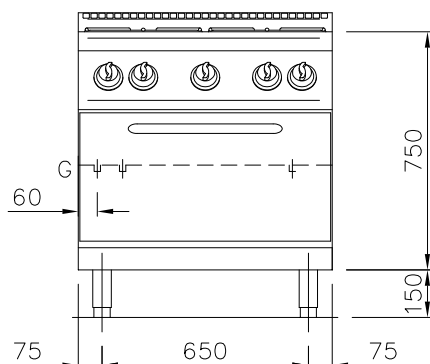
SILKO
IDEAS. WELL DONE

Range cooker with gas hob constructed from Aisi 304 stainless steel. 20/10 pressed top, designed for flush alignment. Appliance standard comprises 4 sealed burners, 3 of which with maximum output of 6 kW, 1 with 9 kW output. Safety tap with thermocouple for continuous output control from 1,6 to 6 kW and from 2,5 to 9 kW respectively. Main burner ignition by means of permanent, low-energy pilot burner (170 W). Pilot burner and thermocouple are located underneath the main burner body, protected from accidental impact and any spills.

Hob features radiused corners for ease of cleaning and pan supports in RAAF enamelled cast-iron (acid, alkali and flame resistant). GN 2/1 gas oven with thermostatic control valve providing temperature adjustment from 50°C to 300°C. Burner with stabilized flame complete with pilot flame, safety thermocouple and piezoelectric ignition. Cooking chamber in stainless steel, dimensions 575x700x300 mm. Oven power 8 kW. Oven bottom in cast iron. Oven inner door in stainless steel with labyrinth seal. Appliance equipped with height adjustable feet in stainless steel.



Width mm.:	800
Depth mm.:	900
Height mm.:	900
Weight kg.:	-
Volume m ³ :	1
Voltage: EL.	-
Power kW.:	-
Gas Power (kw):	35



NOTE

- All dimensions reported on the drawing are meant with finished tiled-floor and side walls
- Main gas connections must be provided of closing gate device
- Mass connections must not use welded tubes
- Gas connections must be settled according to current rules in the country
- Electric connections must be provided of safety switch and a minimum exit wire of 1,5 meter length (except where otherwise required in the drawing) - All sockets must be built according to safety-rules in force. Suited for humid room and settled with necessary plug
- All electric connections must be provided of main switch

G = Gas Ø 1/2"
H2O* = Cold water Ø 1/2"
S H2O* = Drain Ø 1/2"

* = optional

Silko - Ali S.p.A.
Via Cal Larga, 8
Z.I San Giacomo di Veglia
31029 Vittorio Veneto
(TV) ITALY
T (+39) 0438 911930
F (+39) 0438 506291
info@silko.it

www.silko.it