

**SILKO**

SERIES	FAMILY	VERSION	MODEL
900	GAS COOKERS	GAS	NECG96H

**DESCRIZIONE**

CUCINA GAS 6 FUOCHI SU FORNO MAXI GAS

**DATI TECNICI:**

STRUCTURE	ON MAXI GAS OVEN	OVEN CAPACITY	GN 2/1
LENGTH	1200 mm	OVEN POWER	12 kW
DEPTH	900 mm	No. COOKING ZONES	6
HEIGHT	900 mm	INTERNAL OVEN DIMENSIONS	935x640x400 mm
NET WEIGHT	195 kg		
VOLUME	1.5 m3		
GAS POWER	54 kW		



SERIES	FAMILY	VERSION	MODEL
900	GAS COOKERS	GAS	NECG96H

**CARATTERISTICHE:**

6 burner gas cooker, monobloc on gas oven. Pressed Aisi 304 stainless steel hob with 20/10 thickness, designed for butt joining and for mounting the water column accessory. Equipment composed of 6 main burners with a maximum power of 4 of 6 kW, 2 of 9 kW, hermetically fixed to the hob. Continuous power regulation from 1.6 to 6 kW and from 2.5 to 9 kW respectively, via safety tap with thermocouple.

Ignition of the main burner via a low consumption permanent pilot burner (170 W). Pilot burner and thermocouple are placed under the body of the main burner, protected from accidental impacts and possible overflows.

Top with rounded corners for better cleaning, equipped with RAAF enamelled cast iron grids (acid, alkali and flame resistant). GN 2/1 gas oven equipped with thermostatic valve for temperature regulation from 100°C to 330°C.

Stabilized flame burner complete with pilot flame, safety thermocouple and piezoelectric ignition.

Stainless steel cooking chamber measuring 93.5x64x40h cm. Oven power 12 kW. Cast iron oven hearth. Stainless steel oven inner door with labyrinth seal. Equipment equipped with height-adjustable stainless steel feet.

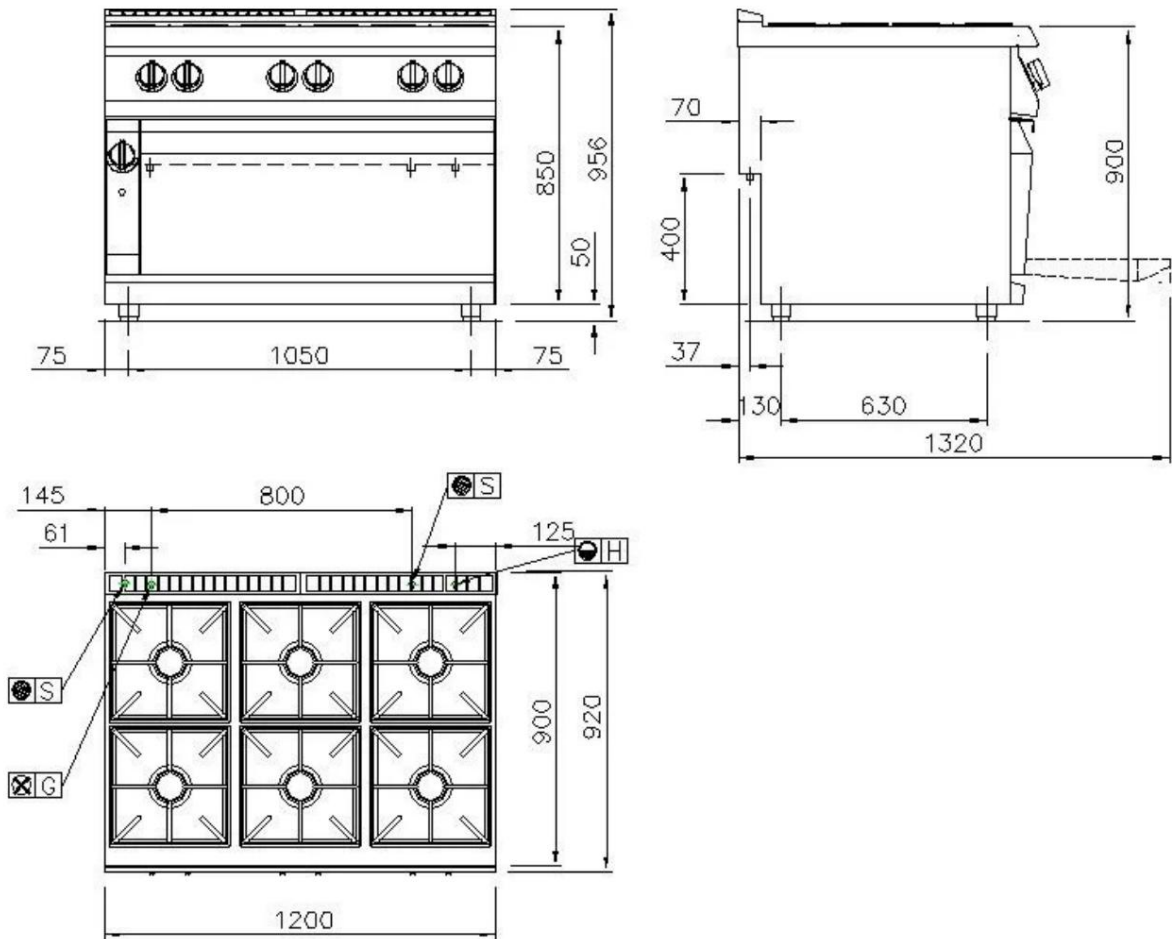
**ACCESSORI OPTIONAL:**

• ELECTRIC IGNITER KIT	EXACEL6
• WATER LOADING AND DRAINAGE KIT ON THE BURNER TRAY	EXSCA6
• CAST IRON GRILL FOR A FIRE	EGG9
• STAINLESS ROD GRILL FOR A FIRE	EGT9
• SMOOTH CAST IRON PLATE	EGHL
• RIBBED CAST IRON PLATE	EGH
• GN 2/1 OVEN GRID	GF21
• OVEN TRAY	ELBF
• MAXI OVEN GRID	EGFMX



SERIES	FAMILY	VERSION	MODEL
900	GAS COOKERS	GAS	NECG96H

SCHEMA DI INSTALLAZIONE



	E1	ELECTRICAL ARRIVAL		
	AF	COLD WATER	Ø 1/2"	100 mm
	AC	HOT WATER		
	G	GAS	Ø 1/2"	100 mm
	S	UNLOAD	Ø 40mm N°2	0 mm

NOTES FOR THE INSTALLER:

All water and gas inlets must be equipped with a shut-off tap or ball valve. The main gas pipe must be complete with a closing gate valve. For gas pipes use non-welded pipes.

The gas pipes must be "jacketed" where required by current regulations. For all electrical cable outputs, provide an exclusion switch and a spare output cable of 1.5 meters (unless otherwise indicated in the plan). The electrical sockets will be of the "TICINO accident prevention" type (or similar) suitable for humid environments and complete with relative plug. Provide a general switch for all electrical supplies.

The data reported in this document are to be considered non-binding and relating to the standard version. The company reserves the right to make technical changes at any time.