

Airpot use instructions and cleaning



Dispenser Diagram



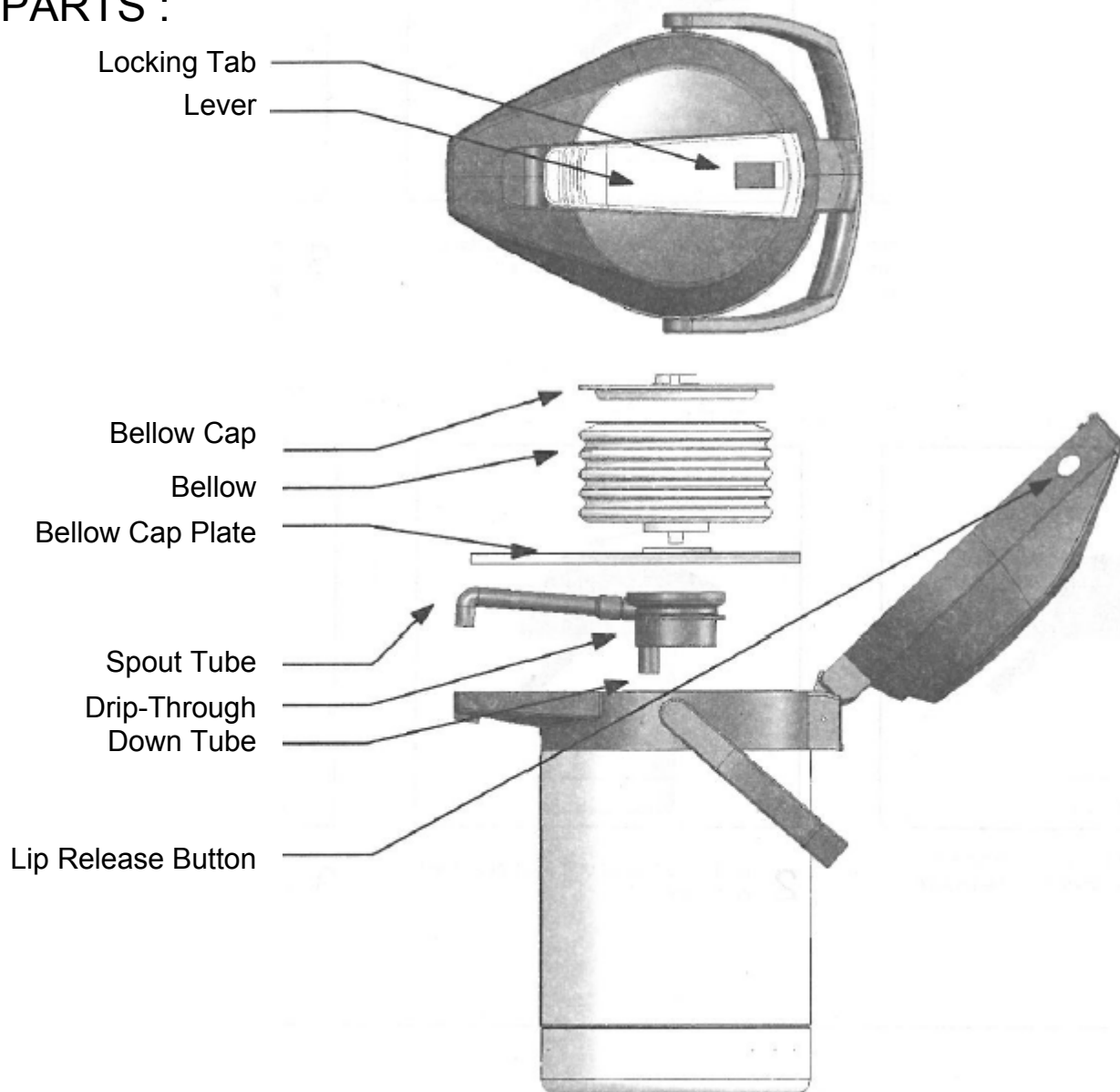
D041 (3 liter) and
D063 (1 gallon) Airpot

DESCRIPTION : Dispenser Diagram

The FETCO D041 (3 liter) and D063 (1 gallon) airpots are lever type, air pressure evacuated beverage dispenser featuring double-wall, vacuum insulated construction.

The hermetically sealed vacuum double-wall construction provides excellent heat or cold retention, while the stainless steel outer and inner liners provide robust durability.

PARTS :



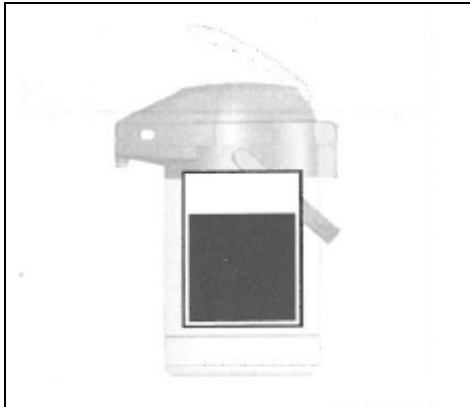
Dispenser Operation Instructions



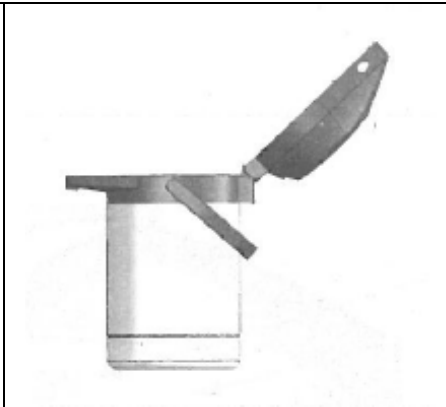
FETCO
DRIVEN TO INNOVATION®

D041 (3 liter) and
D063 (1 gallon) Airpot

To Fill :



- 1** Set brewer to dispense the proper amount into the airpot :
3 liters (FETCO D041)
-or-
1gallon (FETCO D063)



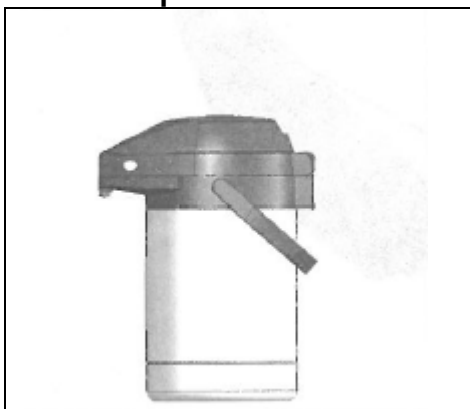
- 2** Squeeze the **Lid Release Buttons** to release the lid.

Swing the lid completely backwards



- 3** Place the airpot under the brewer against the airpot dispenser Locator (if featured).
Align the center of the airpot Drip-Through with the outlet of the brewbasket.

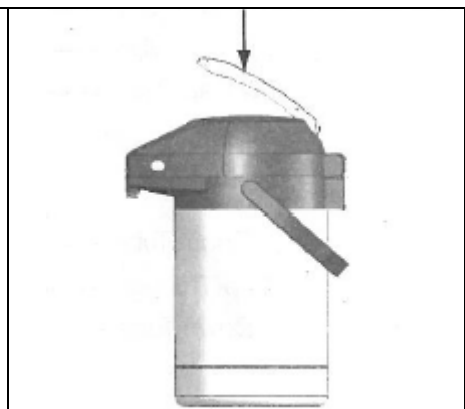
To Dispense:



- 1** After the brew cycle is completed:
Remove the airpot from under the brewbasket and close the lid.



- 2** Lift the handle up until the Lever Lock drops into position, and engages the pump mechanism.



- 3** Push the lever downwards multiple times to dispense the desired amount

Dispenser Cleaning & Maintenance



D041 (3 liter) and
D063 (1 gallon) Airpot

To Clean :



- 1 Squeeze the Lid Release Buttons to release the lid. Press the Lid Detach Button that will completely detach the lid. Remove the Lid Cover.

- 2 Remove the **Drip-Through**. Detach the **Down-Tube** and the **Spout-Tube**. Clean with warm water, detergent and a brush. Proprietary airpot cleaners may also be used.

- 3 Carefully remove the bellows Cap. Handling the parts gently, clean the **Bellows**, **Bellows Cap**, and **Bellow Cap Plate** with warm water, and non-abrasive mild detergent.



- 4 Clean the interior of the tank with warm water, detergent and a brush. Proprietary airpot cleaners may also be used.
Do not put the airpot into an automatic dishwasher.
Do not allow solutions containing chlorine to remain in tank.

- 5 Clean the exterior of the unit with warm water, non-abrasive mild detergent.
Do not submerge the unit in water

- 6 Do not use petroleum based or organic cleaners on food equipment.
Never use cleaners or polishes formulated with the solvent diethylene glycol butyl ether (DGBE) on any equipment.